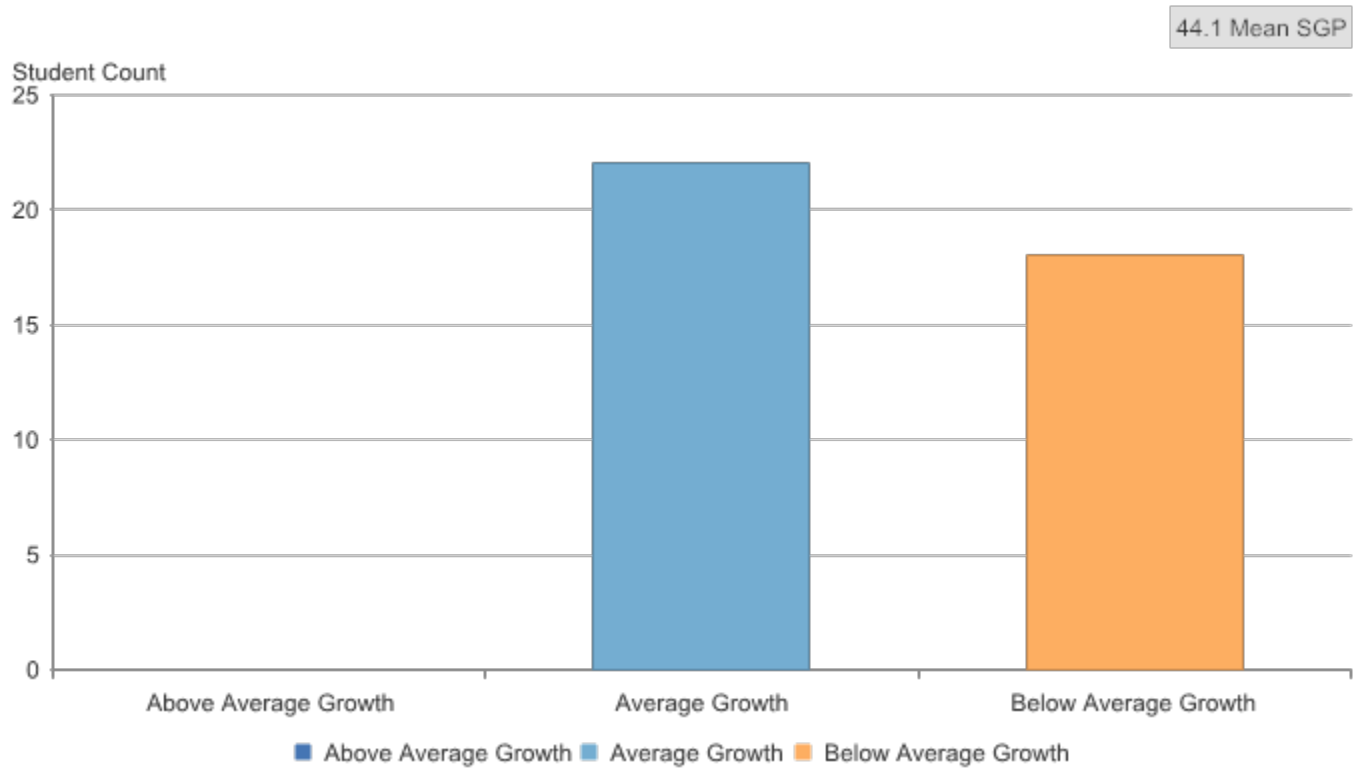


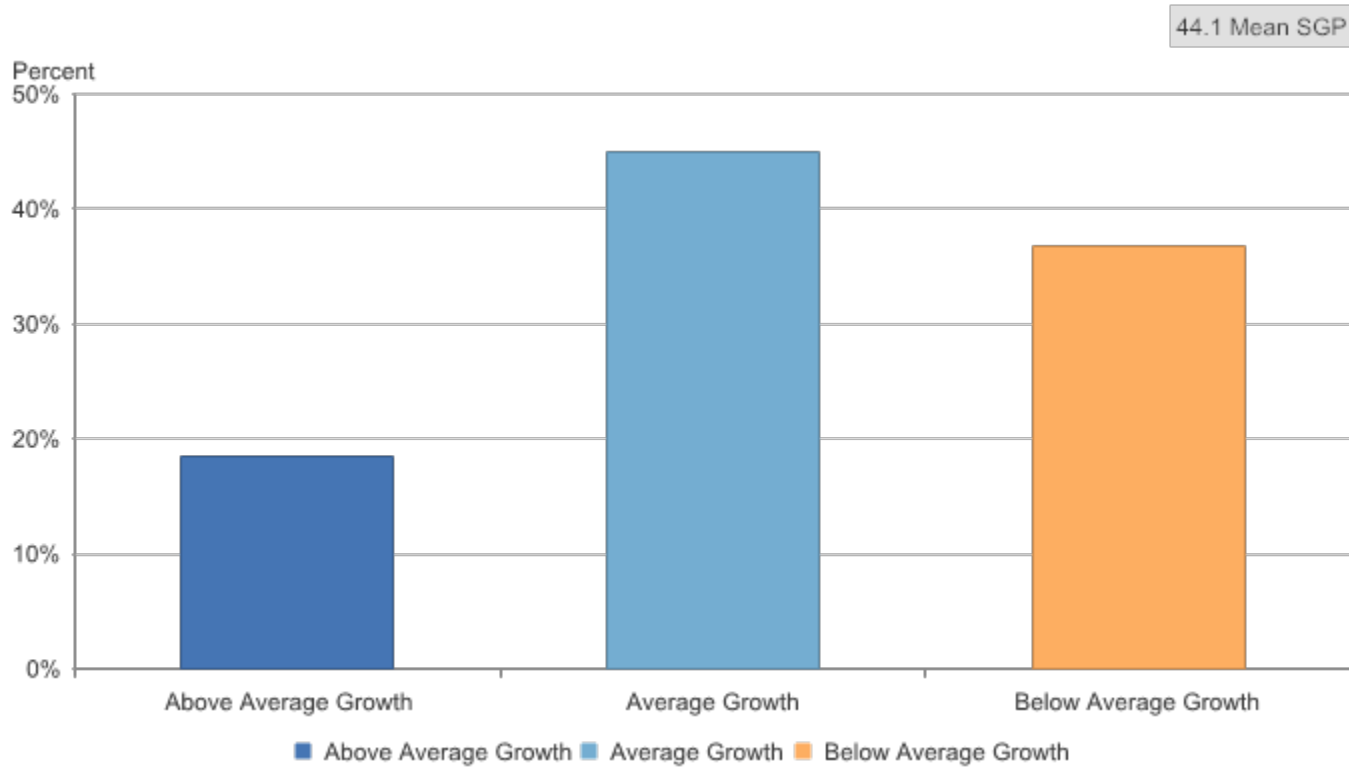
Student Growth Snapshot

Johannesburg-Lewiston Area Schools (69030): 2016-17 / 11th / ELA / All Students



Student Growth Snapshot

Johannesburg-Lewiston Area Schools (69030): 2016-17 / 11th / ELA / All Students



Student Growth Snapshot

Johannesburg-Lewiston Area Schools (69030): 2016-17 / 11th / ELA / All Students

Subject	Report Category	Number Above Average Growth	Number Average Growth	Number Below Average Growth	Number Assessed	Mean SGP
English Language Arts	All Students	<10	22	18	49	44.1

Student Growth Snapshot

Johannesburg-Lewiston Area Schools (69030): 2016-17 / 11th / ELA / All Students

Subject	Report Category	Percent Above Average Growth	Percent Average Growth	Percent Below Average Growth	Number Assessed	Mean SGP
English Language Arts	All Students	18.4%	44.9%	36.7%	49	44.1

Student Growth Snapshot

Johannesburg-Lewiston Area Schools (69030): 2016-17 / 11th / ELA / All Students

Location Type	Location Name	Subject	Report Category	Number Above Average Growth	Number Average Growth	Number Below Average Growth	Number Assessed	Mean SGP
Statewide	Statewide	English Language Arts	All Students	27,340	37,461	28,779	93,580	49.7
ISD	Cheb-Otsego-Presque Isle ESD	English Language Arts	All Students	115	244	199	558	44.6
District	Johannesburg-Lewiston Area Schools	English Language Arts	All Students	<10	22	18	49	44.1
School	Johannesburg-Lewiston High School	English Language Arts	All Students	<10	22	18	49	44.1

Student Growth Snapshot

Johannesburg-Lewiston Area Schools (69030): 2016-17 / 11th / ELA / All Students

Location Type	Location Name	Subject	Report Category	Percent Above Average Growth	Percent Average Growth	Percent Below Average Growth	Number Assessed	Mean SGP
Statewide	Statewide	English Language Arts	All Students	29.2%	40.0%	30.8%	93,580	49.7
ISD	Cheb-Otsego-Presque Isle ESD	English Language Arts	All Students	20.6%	43.7%	35.7%	558	44.6
District	Johannesburg-Lewiston Area Schools	English Language Arts	All Students	18.4%	44.9%	36.7%	49	44.1
School	Johannesburg-Lewiston High School	English Language Arts	All Students	18.4%	44.9%	36.7%	49	44.1